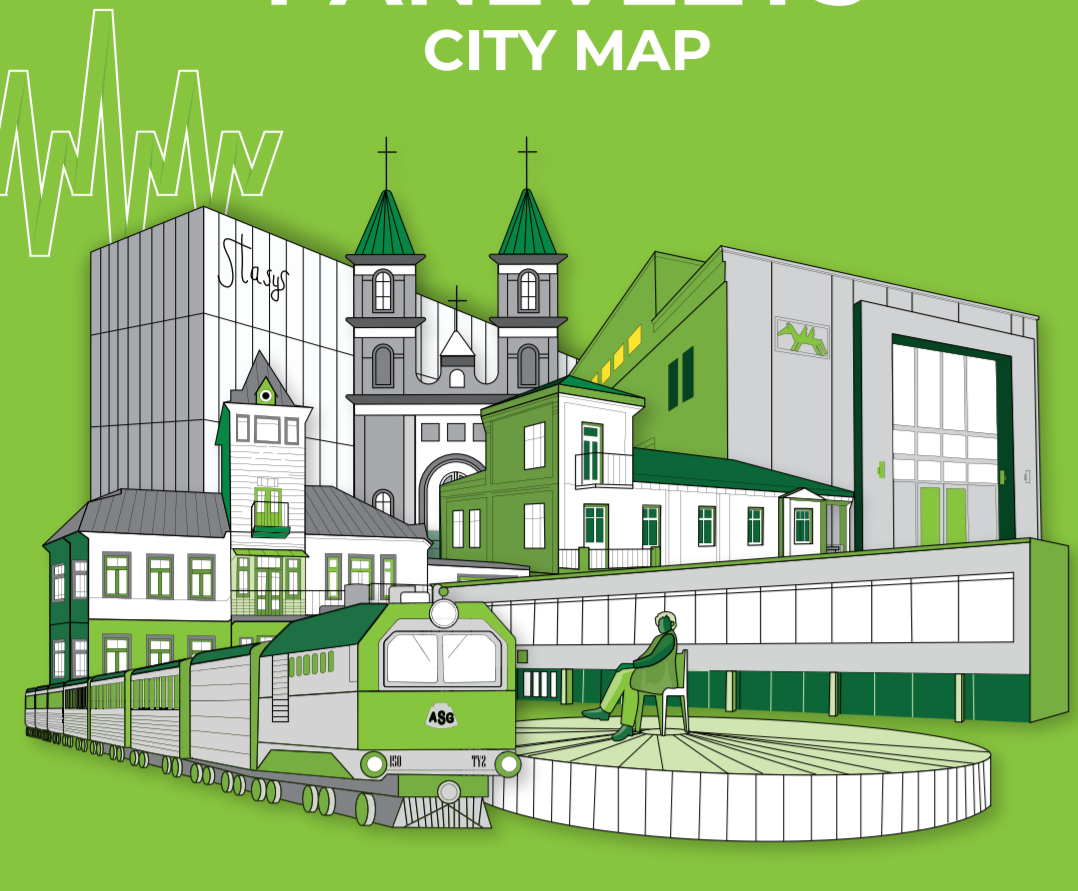


# PANEVĖŽYS CITY MAP



## UNIQUE OBJECTS

### 1. AUKŠTAITIJA NARROW-GAUGE RAILWAY COMPLEX

Geležinkelio g. 23  
www.siaurukas.eu

Everybody loves to just call it Siaurukas. The Aukštaitija narrow-gauge train has already successfully taken passengers on unforgettable adventures and told its stories for two centuries already. The narrow-gauge railway depot is a new cultural space in the city. Here, you will not only have a chance to experience the spirit of another century, but also to discover unique entertainment activities – from riding handcart to educational programmes, events and festive, sightseeing, charter and other special trips.

### 2. GLASS ART STUDIO "GLASREMIS"

Meistrų g. 9  
www.glasremis.com

The artistic glass studio has already been open for three decades and is the largest glass gallery in Lithuania. The founder of the gallery is glass artist Remigijus Kriukas, who is famous not only in Lithuania, but throughout the world. Here, you will enter the real kingdom of glass, where you

will have an opportunity to see glass products of various sizes and unique shapes as well as sculptures, and learn how unique hand-formed products are created.

### 3. NATURE SCHOOL OF PANEVĖŽYS

Smėlynės g. 171  
www.gamtosmokykla.panevezys.lm.lt

The school is established in a unique two-storey wooden building with a mezzanine and a tower, which is the only such school in Lithuania and nurtures the ideas of harmony between man and nature. The former villa of lawyer Ceslovas Petraškevičius – which is open for visitors – is equipped with exclusive educational spaces and a mini-zoo with more than 50 species of animal. Here you will not only hear a talking raven but will also get a chance to see the most dangerous animal in the world.

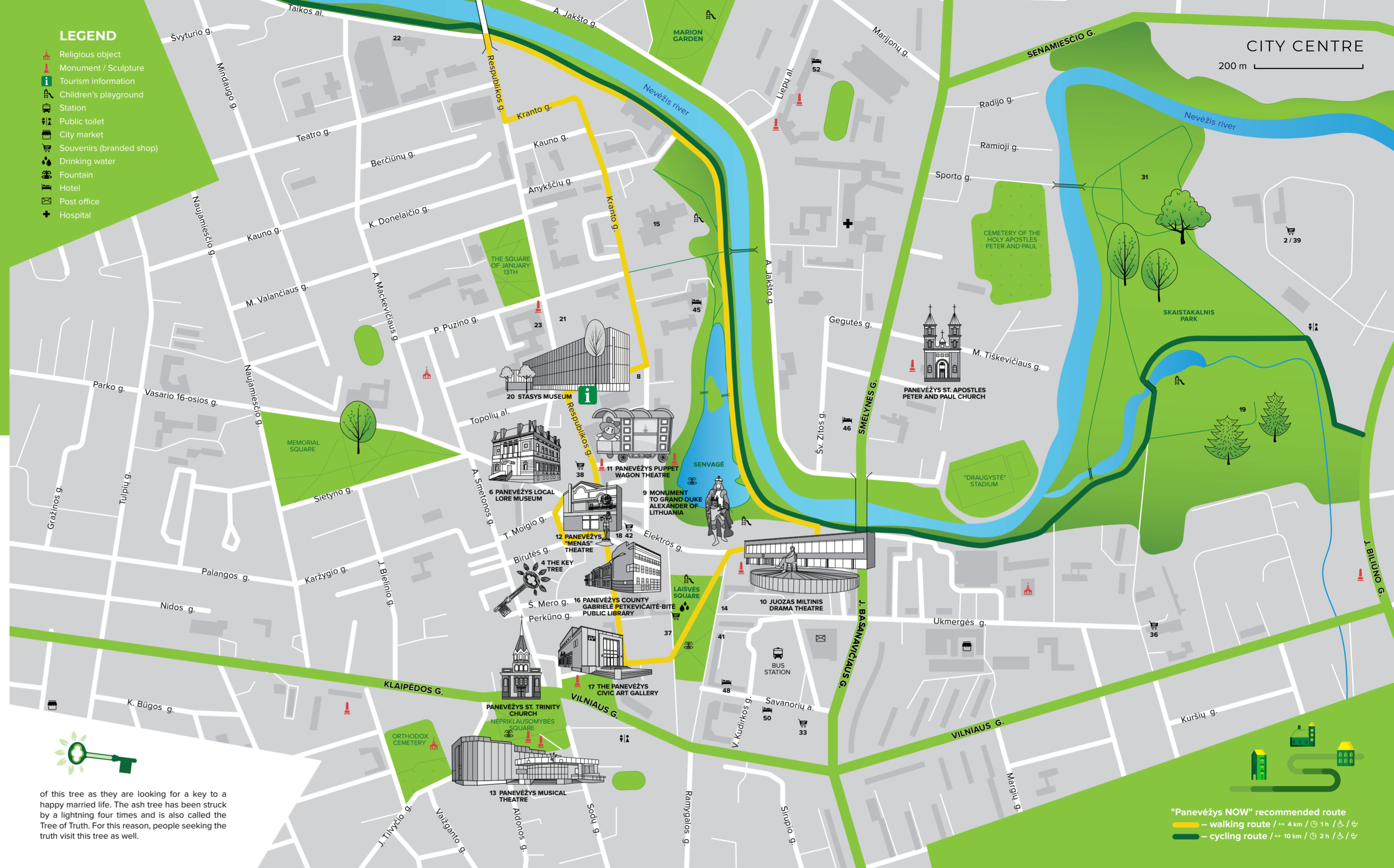
### 4. THE KEY TREE

Birutės g. 5

Panevėžys has one special ash tree. During excavation work, a box with 70 keys was discovered underground, next to a tree. All these keys were hung on this particular ash tree. Today, this special tree is decorated by thousands of different keys, and everybody is still welcome to bring their own and leave it hanging here as well. Not only the residents but city guests also love to visit this tree, especially newlyweds who are fond

## LEGEND

- Religious object
- Monument / Sculpture
- Tourism information
- Children's playground
- Station
- Public toilet
- City market
- Souvenirs (branded shop)
- Drinking water
- Fountain
- Hotel
- Post office
- Hospital



"Panevėžys NOW" recommended route  
 – walking route / → 4 km / 1h / 15 / 15  
 – cycling route / → 10 km / 2h / 15 / 15

## FOLLOWING THE FOOTSTEPS OF HISTORY

### 5. JUOZAS MILTINIS MEMORIAL APARTMENT

Algirdo g. 54-19  
www.miltinis.lt

One can find an entire unique legacy of the legendary theatre director Juozas Miltinis in his authentic home space. Here, you will see the personal library of Miltinis, a collection of manuscripts, works of art, a video library of rehearsals and audio recordings, photos and personal belongings. The memorial apartment of the theatre director holds a modern exposition of his personal life and work as well as various educational programmes and events.

### 6. PANEVĖŽYS LOCAL LORE MUSEUM

Vasario 16-osios g. 23  
www.paneveziomuziejus.lt

This is one of the region's oldest regional museums and greets its visitors with expressive expositions and excursions that tell unheard stories. The museum invites visitors to take

educational classes where they will get to know the history, nature and ethnic and urban culture of the Panevėžys region. Gastronomy lovers are invited to visit the kitchen, where they can take an educational programme and taste and prepare traditional authentic Aukštaitija region dumplings, which are exceptional in their mesmerising flavour.

### 7. EXHIBITION OF THE RESISTANCE TO THE SOVIET OCCUPATION AND THE SAJŪDIS MOVEMENT

Respublikos g. 17  
www.paneveziomuziejus.lt

In the former premises of the Panevėžys Sajūdis group, authentic exhibits are waiting for you, creating a realistic mood and introducing you to the most important stages of the anti-Soviet movement and the history of deportations in the Panevėžys region. The modern exhibition offers breath-taking photos, movies and educational programmes.

### 8. THE OLDEST BUILDING IN PANEVĖŽYS

Kranto g. 21  
www.paneveziomuziejus.lt

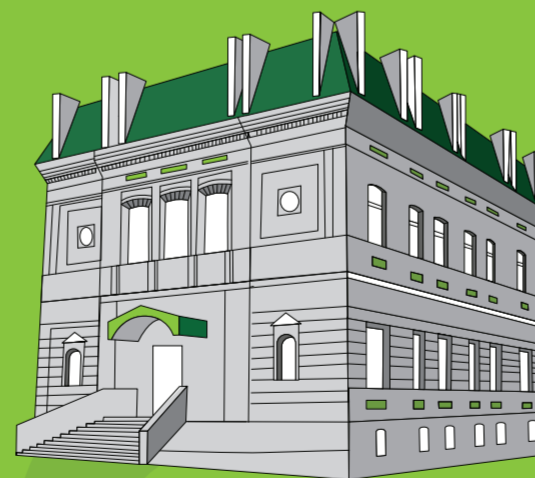
It is not only the oldest building in Panevėžys, but also the oldest archive building in Lithuania. This 400-year-old brick house, which once stored the most important court documents, today takes you back to the times of the Grand Duchy of

Lithuania, presenting the famous nobles of the Panevėžys region.

### 9. MONUMENT TO GRAND DUKE ALEXANDER OF LITHUANIA

Elektros g.

Grand Duke Alexander of Lithuania is considered to be the founder of the city and now you can meet him while travelling to Senvagė. At the entrance to one of the most beautiful places in the city, the duke looks down at Panevėžys holding the symbolic St. Apostles Peter and Paul Church. This granite sculpture was created by the famous sculptor and national award winner, Panevėžys citizen Stanislovas Kuzma. The sculpture was presented during the 500th anniversary of Panevėžys.



## MAGIC OF THEATRES

### 10. JUOZAS MILTINIS DRAMA THEATRE

Laisvės a. 5  
www.miltinioteatras.lt

The history of theatre is closely related to the legend of theatre director Juozas Miltinis and the actors he once taught. Today, the vision of Miltinis harmoniously coexists with the ideas of young creators and attracts a large number of spectators who are fond of the theatre scene. The theatre offers a repertoire suitable for various age groups, both classical and contemporary plays. It regularly hosts excursions, educational activities, exhibitions and meetings with theatre personalities, and presents artistic installations.

### 11. PANEVĖŽYS PUPPET WAGON THEATRE

Respublikos g. 30  
www.leliuvezimoteatras.lt

The travelling Puppet Wagon Theatre is unique in Europe. Every summer it goes on tour across Lithuania and spreads magical puppet theatre art, which is filled with fantasy. The main actors here are puppets, but the plays are intended not only for children but for adults too. In addition, the theatre offers educational programmes,

where one can learn about theatre activity, puppet control techniques and their production peculiarities.

### 12. PANEVĖŽYS "MENAS" THEATRE

Vasario 16-osios g. 19  
www.teatrasmenas.lt

During the three decades of its existence, this chamber theatre managed to win the hearts of Panevėžys citizens and locals. At the moment, "Menas" is living its renaissance, delighting the viewers with a variety of genres and forms: impressive performances, events and, of course, plays for adults and children. Every year, this theatre invites people to the biggest spring event in Northern Lithuania – the Chamber International Performing Arts Festival.

### 13. PANEVĖŽYS MUSICAL THEATRE

Nepriklausomybės a. 8  
www.paneveziomuzikinis.lt

A theatre surrounded by the sounds of music is an integral part of the city's culture. This musical theatre offers everything – from concerts to ballet and musical performances. The theatre's repertoire ranges from local to world classics.

## WELCOME TO PANEVĖŽYS!

The city that has an exceptionally rich history, made famous by the citizens that created it, renowned for its culture and industry. The magic of theatres, musical twists, ceramic shapes and artistic innovations all come together here. The city is notable for its remarkable and unique objects, such as the narrow-gauge railway, which has been running for more than a hundred years, the one-of-a-kind-in-Europe Puppet Wagon Theatre, the largest glass gallery in the country, shows of the fountain of the dancing light that has no equivalents in any of the Baltic states. Here, the heritage of Panevėžys history and industrial legends are reborn. This green city is both crossed and surrounded by water; therefore, one can enjoy the serenity of nature in every spot of the city.

**PANEVĖŽYS NOW**  
**TOURISM INFORMATION**  
 Respublikos g. 40  
 www.panevezysnow.lt  
 info@panevezysnow.lt  
 +370 615 40 973

PanevezysNOW ir @kaveiktiPanevezyje  
 panevezysnow



# CULTURE CENTRES

**14. GALLERY XX**  
Laisvės a. 7  
www.galerijaxx.lt

Personal exhibitions of Lithuanian and foreign artists are usually exhibited in this small, cosy gallery located in the very heart of the city – Laisvės Square.

**15. PANEVĖŽYS CULTURAL CENTER**  
Kranto g. 28  
www.pankultura.lt

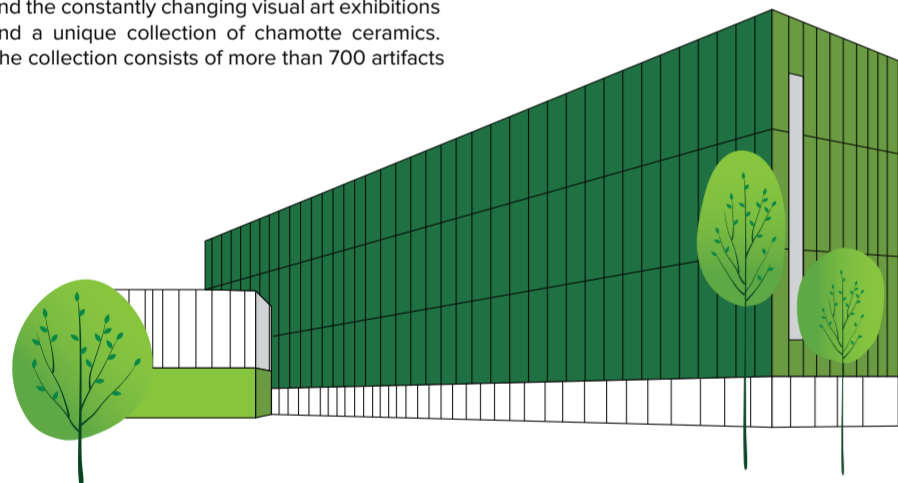
Almost every evening the halls of this chamber host concerts of local and foreign musicians, theatre plays and other events. Shortly after arriving, you will be acquainted with culture by exploring the exhibitions displayed in the lobby. Children may find educational programmes that are being held for them in the chamber, and rehearsals of various amateur artistic activities take place in the auditoriums.

**16. PANEVĖŽYS COUNTY GABRIELĖ PETKEVIČAITĖ-BITĖ PUBLIC LIBRARY**  
Respublikos g. 14  
www.pavb.lt

The library, which has been active for a hundred years, is established in a building where historical and temporary architecture is combined. Its spaces are filled with life: a whirl of communities, educational programmes for children and adults, cultural and educational events and constant exhibitions. When taking a tour around the library you will see a collection of cultural artifacts and a treasure of old prints and manuscripts, and you will get to know the outstanding personalities of Gabrielė Petkevičaitė-Bitė and Eizbieta Jodinskaitė.

**17. THE PANEVĖŽYS CIVIC ART GALLERY**  
Respublikos g. 3  
www.arspanevezys.lt

Those who are fond of art should visit this gallery, which is the leading tourism attraction. One will find the constantly changing visual art exhibitions and a unique collection of chamotte ceramics. The collection consists of more than 700 artifacts



# MORE OF PANEVĖŽYS

- 21. "GALERIJA BE STOGO" (ENG. GALLERY WITHOUT A ROOF)  
Respublikos g. 46
- 22. "KALNAPILIS" WALL MURAL  
Tajkos al. 1
- 23. CERAMICS EXHIBITION "MIESTO RELJEFAI" (ENG. URBAN RELIEFS)  
Vasario 16-osios g. 19
- 24. CINEMA CENTRE "GARSAS"  
Klaipėdos g. 146
- 25. PANEVĖŽYS CENTRE OF ROBOTICS "ROBOLABAS"  
Kniaudiškių g. 40
- 26. PANEVĖŽYS SPORTS HISTORY EXPOSITION AT "KALNAPILIO" ARENA  
Parko g. 12
- 27. PANEVĖŽYS WINDMILLS  
Ramygalos g.
- 28. CERAMIC PANEL "PANEVĖŽIEČIAI" (ENG. RESIDENTS OF PANEVĖŽYS)  
Laisvės a. 23
- 29. SKATEPARK  
Parko g.
- 30. HOUSE OF ARTS STANKŪNAS GALLERY  
Ramygalos g. 30
- 31. SHINING SODAI (LITHUANIAN TRADITIONAL GARDENS)  
Skaistakalnio parkas

that were created by professional ceramics from different countries. The gallery offers not only to add more works of the artists but also to participate in the process of creation by taking educational artistic programmes.

**18. PHOTOGRAPHY GALLERY**  
Vasario 16-osios g. 11  
www.arspanevezys.lt

In the Panevėžys art gallery department, which is dedicated to fans of artistic photography, you will see exhibitions of the works of both the youngest photo artists and the real masters of photography. You will also become familiar with Lithuanian and foreign photography art.

**19. PANEVĖŽYS CENTRE OF CREATIVITY "PRAGIEDRULIAI"**  
Ukmergės g. 59A  
www.pragiedrek.lt

The red brick manor, which can be found in the oldest city park, is the historical homestead of Juozas Čerkesas-Besparnis. A place that was once the centre of culture came back to life and is pulsating with creativity again. Now it is home to a new creativity centre "Pragiedruliai", which invites people to nurture and grow culture and art together. Here, you will find impressive exhibitions, artistic workshops, educational programmes, artist residencies and other activities intended for communities and city guests.

**20. STASYS MUSEUM**  
Respublikos g. 40  
www.stasysmuseum.com

The latest addition to Lithuania's contemporary art scene, Stasys Museum, was named after the internationally renowned local resident Stasys Eidrigevicius. The collection features works that reveal the artist's diverse expressions through various forms and techniques honed by the creator. Stasys Museum is a space for cultural dialogue, creative industries and education, complemented by an impressive panoramic rooftop terrace and a gastronomic café.

**32. A. AND G. AUDICKAS BICYCLE MUSEUM COLLECTION**  
Staniūnų g. 66

# SOUVENIRS

If you are looking for authentic souvenirs from Panevėžys, you should visit the special branded shops by Panevėžys production companies. Here you will find unique products that are manufactured locally.

- 33. "PANEVĖŽIO EGLĖ" BRANDED CONFECTIONERY SHOP  
Savanorių g. 11
- 34. SUPERGARDEN  
Ramygalos g. 149 E
- 35. GIJA, BRAND STORE OF LINAS AB  
Kerbedžio g. 23
- 36. AB "NAUJOJI RINGUVA" BRANDED SHOP  
Staniūnų g. 1
- 37. AB "PIENO ŽVAIGŽDĖS" BRANDED SHOP  
Laisvės a. 25
- 38. J. MASIULIS BOOKSHOP  
Respublikos g. 21
- 39. "GLASREMIS" ART GLASS STUDIO  
Meistrų g. 9

# WHERE TO STAY

- 45. HOTEL "ROMANTIC BOUTIQUE HOTEL & SPA"  
Kranto g. 24
- 46. HOTEL "SMĖLYNĖ"  
Smėlynės g. 3
- 47. HOTEL "PERVAŽA"  
Smėlynės g. 112
- 48. HOTEL "CONVIVA"  
Laisvės a. 16
- 49. GUESTHOUSE "KAZIUKO KAMARA"  
Klaipėdos g. 67
- 50. B&B "ARTIHOST"  
Savanorių a. 12
- 51. B&B "PANEVĖŽIO SPORTO CENTRAS"  
Liepų a. 4
- 52. B&B "VERSLO KLASĖ"  
Smėlynės g. 104
- 53. B&B PANEVĖŽYS  
Jstro g. 1



# USEFUL LINKS

**BILLETAS.LTGLINK.LT**  
railway information

**BOLT.EU**  
electric scooter rental

**EV.LAKD.LT**  
charging stations for electric cars

**FOTO.PANEVEZYSNOW.LT**  
Panevėžys photo bank

**PANEVEZIOAUTOBUSAI.LT**  
suburban and intercity buses

**PANEVEZYSNOW.LT**  
tourism information

**RENGINIAI.PANEVEZYSNOW.LT**  
information about the events in the city

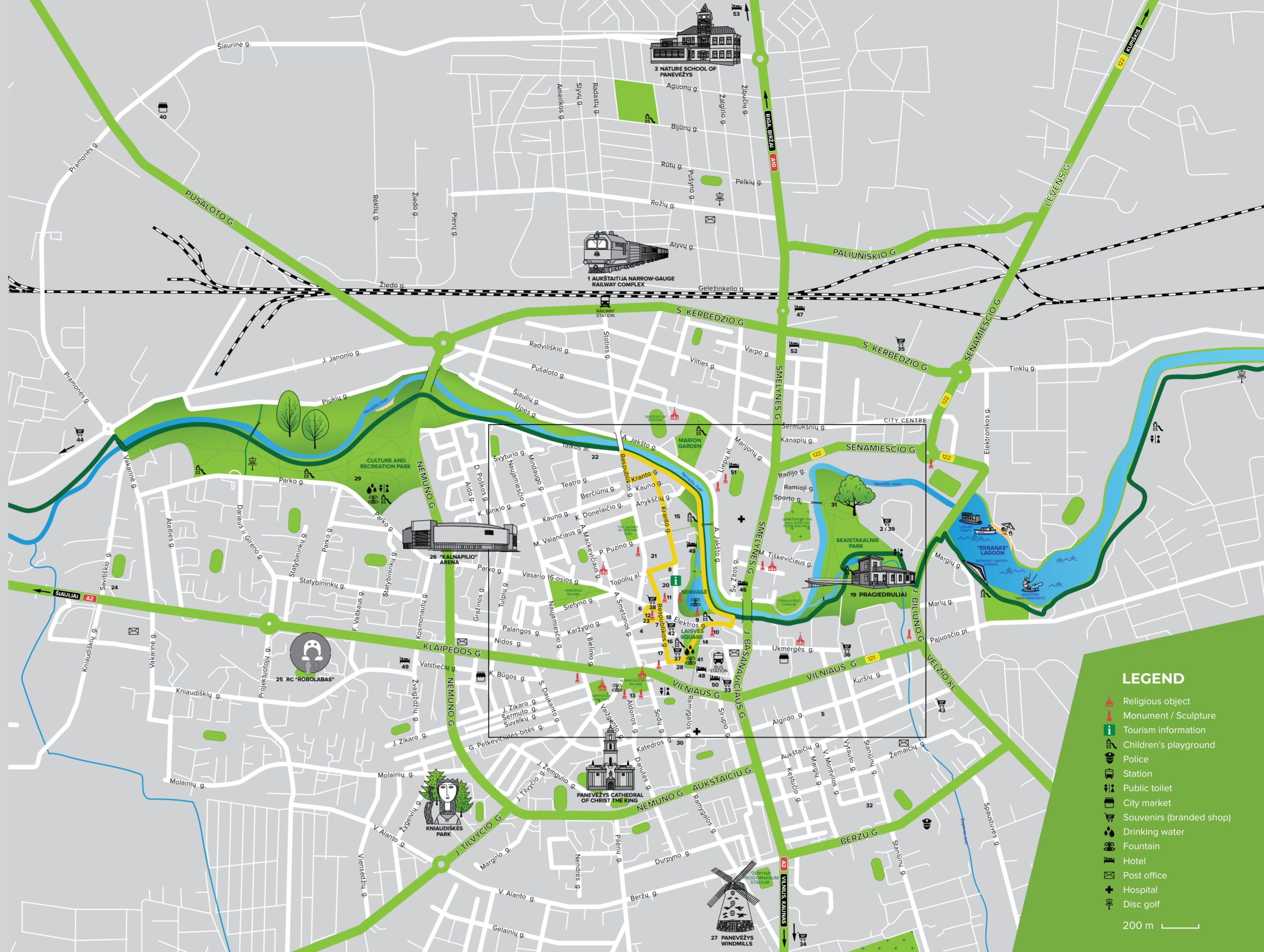
**STOPS.LT**  
public transport

**TRAFI.LT**  
public transport traffic in real time

**UNIPARK.LT**  
paid parking lots



- 40. PANEVĖŽYS CAR MARKET OR FLEA MARKET  
Pramonės g. 10B
- 41. PANEVĖŽYS DEVELOPMENT AGENCY "PANEVĖŽYS NOW"  
Laisvės a. 11
- 42. PANEVĖŽYS OLD TOWN GALLERY SHOP  
Vasario 16-osios g. 11
- 43. VASARIS SHOPPING CENTRE  
Aukštaičių g. 88
- 44. DEVOLD UAB BRANDED STORE – DEVOLD OUTLET  
J. Janonio g. 66



# GREEN SPACES

**"EKRAŅAS" LAGOON COAST**  
J. Biliūno g.

The 4-kilometre stretch of lagoon coast will offer suitable activities for everyone. Here, you can find a number of water entertainment activities: pedalo riding, paddle boards or water skis, cosy places for picnics, walks, nature watching, dog parks and other entertaining activities suitable for every season of the year.

**KNIAUDIŠKĖS PARK**  
Žygeivių g.

This is a playful city park that was established according to the motifs of the famous tale "Eglė, the queen of grass snakes". An unforgettable visit is guaranteed, because the story will have to be started and continued by walking the route and performing various tasks that are closely related to the symbolism of the tale.

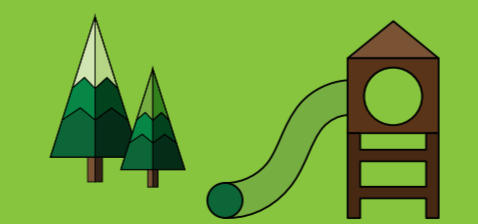
**CULTURE AND RECREATION PARK**  
Parko g.

The sound of people humming never dies in this largest park in the city. The park is equipped with

children's playgrounds that are always full, bike paths and other spaces suitable for sports enthusiasts. And those who are looking for some peaceful time at the Nevežis riverbank can find observation decks and resting zones.

**LAIŠVĖS SQUARE**

This square is like a triangle-shaped heart of Panevėžys. The main square of the city is bustling with life: celebrations are taking place here, a lot of spaces for events have been established, shops and cosy cafes are open, inviting people to sit down and admire the views of the city. Part of the city's history is buried under the hundred-year-old tree of the square – the letter bricks hide key city events and dates. Interesting fact: every inscribed phrase is made of the same number of symbols – 150.



**MARION GARDEN**  
Jakšto g.

From a place for greenhouses to a garden for walks, basketball, events and children's games –

this is how the park near the church has changed. Almost 90 years ago, the Marion monks established a nursery here with large greenhouses for growing flowers and fruits, and today the renovated park, named the Marion Garden, delights the locals and city guests.

**SENVAGĖ**  
Elektros g.

The old river bed is one of the most iconic symbols of Panevėžys. This oasis of peace, which is situated in the very heart of the city, is embedded in the life story of every resident – from shy first dates to the sun greeting on prom mornings. You can admire the city from the tiny island of the old river bed, which is equipped with comfortable rest areas, and in the warm season, you can also see a unique show of light and music fountain here.

**SKAISTAKALNIS PARK**  
J. Biliūno g.

This is the oldest park in Panevėžys, whose territory was formed as long ago as the pagan times. The name of the park is also derived from pagan times. The word "skaistas" (Eng.: bright) is associated with the word "šventas" (Eng.: sacred) and marks the sacred meaning of this place. Here the ancestors worshiped the deities of the earth and the sky and burned the fire in the altar. A special paving stone, marked with a hollow, has remained in the Nevežis river to this day.

# JOURNEY IN PANEVĖŽYS

From peaceful relaxation surrounded by nature, via fun activities for the whole family, to active adventures and cultural exploration, Panevėžys offers a wide range of experiences that require more than a day to fully enjoy. Special offers will help you plan your trip and discover diverse experiences in this lively, green, engaging, open, and culturally diverse city.

The offers include over 80 different activities: Lively Panevėžys engages families in fun pastimes designed for children, Green Panevėžys invites you to enjoy the nature surrounding the city, Entertaining Panevėžys offers unforgettable adventures, while Open Panevėžys presents theatre and art experiences complemented by the inspiring offer – Embark on a Journey through the Art and Culture of Panevėžys.

# EVENTS

[WWW.RENGINIAI.PANEVEZYSNOW.LT](http://WWW.RENGINIAI.PANEVEZYSNOW.LT) is a platform that houses information about new plays on the stages of numerous city theatres, constantly updated exhibitions in art galleries, concerts, workshops and other events that are happening in Panevėžys. Follow the Facebook account @KAVEIKTIPANEVEZYJE for information about events and must-sees in Panevėžys.

