



**PANEVĚŽYS: WHERE  
MANUFACTURING  
BUSINESS GOES TO GROW**



# WELCOME TO PANEVĖŽYS

A city where a strong manufacturing industry meets a well-balanced family life



Panevėžys is a city with the best of both worlds. Its well-developed infrastructure, strong manufacturing industry, the active business community, a network of institutions offering high-quality education of all levels are complemented by the vibrant cultural life. Development of Stasys Eidrigėvičius Art Centre will position Panevėžys as the strongest cultural hub in Northern Lithuania. Renovated public spaces provide great conditions for all types of leisure – from quiet walks in one of many city's parks to cycling and water sports. Everything in the city is easily reachable within a few minutes drive, and there is no need to worry about traffic during peak hours. Overall, Panevėžys is very well connected – in less than two hours, one can get to Vilnius, Kaunas, and Riga. Major international highway Via Baltica crosses the city's suburbs, whereas Rail Baltica, currently under construction, will provide a direct fast rail connection between Warsaw, Panevėžys, and Helsinki. Consequently, not only can one enjoy a stress-free life in a green and family-friendly city, but also have excellent career opportunities and the possibility to quickly and safely reach other major cities.

With new investors coming and companies consistently moving up the value chain, the manufacturing industry in Panevėžys is at its strongest now. The city has set an ambitious goal to join the centre of the Industry 4.0 movement. We are proud to witness different stakeholders – from businesses and municipal agencies to local education and science institutions – join in their efforts to build a thriving Industry 4.0 ecosystem. The initiatives taken by Panevėžys City Municipality are already yielding results in many areas of the city's business environment – from ensuring modern and technology-oriented education for children to developing infrastructure that meets business needs. We are glad that the companies operating in the city notice these changes and welcome the business community's suggestions on what further improvements can help companies successfully grow here in Panevėžys.

**Rytis Mykolas Račkauskas**  
Mayor of Panevėžys

# PANEVĖŽYS AT A GLANCE



Young families can enjoy technology-focused education opportunities and lead a stress-free life, making Panevėžys the perfect city for growing a business

The manufacturing business in Panevėžys is at its peak right now, thanks to new investors and companies continually moving up the value chain. Combined with beautiful green spaces and dynamic cultural life, the ambitious city offers a great quality of life for business professionals.

## MODERN MANUFACTURING HUB

Panevėžys, with its long history and know-how in engineering, is not only the largest regional manufacturing centre in Lithuania, but also worldwide supplier of metal and electronic components to well-established brands.

## GREAT QUALITY OF LIFE

Panevėžys is a rapidly renewing city with the best of both worlds. It's a place where excellent career opportunities meet idyllic family life.

Ambitious professionals can contribute to building a thriving Industry 4.0 ecosystem while enjoying the added advantages of a green and family-friendly city that lives and breathes culture. It's easy to commute here, too. One can reach all the major spots in the city within a few minutes drive, which greatly adds to a stress-free life.



- **5th largest city in Lithuania**
- **Established in 1503**
- **Area 50 km<sup>2</sup>**
- **Population 93,000**
- **Density 1717,7 km<sup>2</sup>**
- **Less than 2 hours away from major cities like Vilnius, Kaunas and Riga**
- **Strong manufacturing industry**
- **Active business community**
- **Technology-oriented education**
- **On the way to building the Industry 4.0 ecosystem**

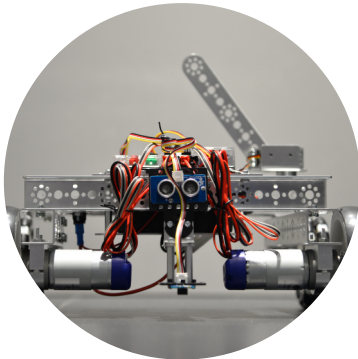


## STRATEGIC LOCATION FOR EXPORT

Panevėžys is situated in the middle of Lithuania; it is halfway between two Baltic capitals - Vilnius and Riga. The city lies in a great geographic location because the Via Baltica highway, which runs through the city, connects Panevėžys to many Scandinavian and West European countries, making Panevėžys an attractive place for exports. Furthermore, the Rail Baltica, currently under construction, will provide a direct fast rail connection between Warsaw, Panevėžys and Helsinki.

## THE HEART OF INDUSTRY 4.0 MOVEMENT

Joining the Industry 4.0 movement is one of the main objectives of the city. Different stakeholders, ranging from local education and science institutions to businesses and municipal agencies, have joined in their efforts in building a thriving Industry 4.0 ecosystem.



## TECHNOLOGY-ORIENTED EDUCATION

In Panevėžys, children learn about technology and engineering from a young age. From non-formal education institutions, such as a robotics and STEAM centers to universities that focus on the industry's needs, students of all ages have a chance to learn how to apply technological knowledge practically from experts in their fields.

## LIFE NEAR A RIVER

Throughout history people have tended to live on or near rivers, Panevėžys is not an exception. The city is situated on the banks of the river Nevėžis, which gave the name to the city itself and makes it a great place to enjoy the peace and tranquility. Senvagė (the Old River Bed) is known as the symbol of Panevėžys and the perfect place for leisure and festivals. Enjoy picturesque views strolling the renewed walking trails or riding a bike.



## RICH HISTORIC HERITAGE

Established in the 16th century, Panevėžys is a city with rich history that's still reflected in its streets. Laisvės Square with its beautiful fountain, colourful flower gardens, the playground for the little ones, boutique-style and art shops is considered to be the heart of the city where modern ideas intertwine with old ones. The city centre is a perfect place to sip a coffee, soak up the atmosphere of the city and watch the world go by.

## CONTEMPORARY ART SCENE

Here one will find a fusion of the industrial sector and art. Industrial spaces are increasingly being adapted for cultural events and exhibitions that tell the story of the daily life of industry employees. The city is also known for its world famous International Ceramic Symposium and the Juozas Miltinis Drama Theatre.



© D. Hermouet.

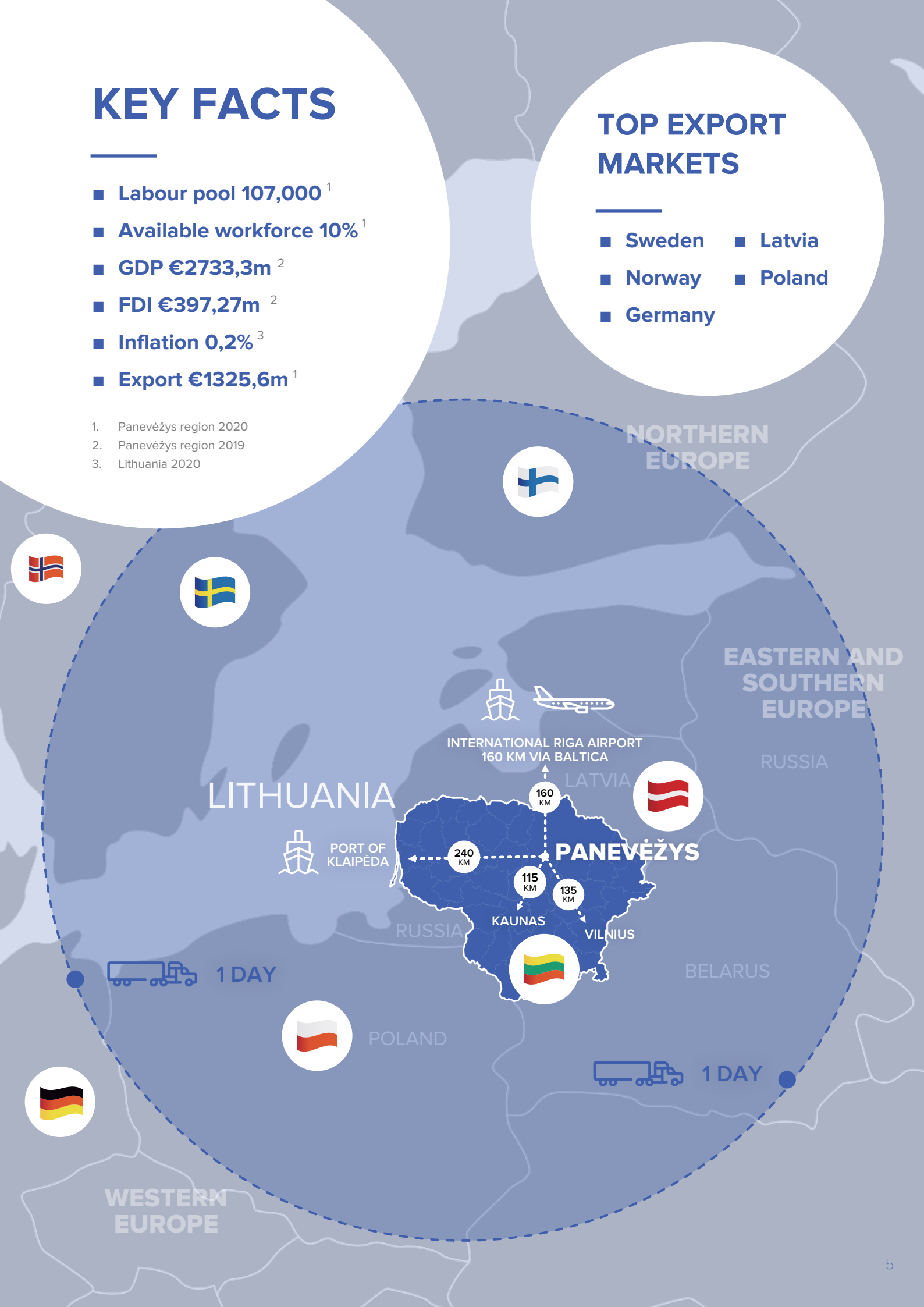
# KEY FACTS

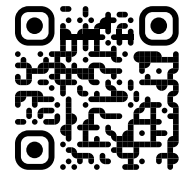
- Labour pool 107,000<sup>1</sup>
- Available workforce 10%<sup>1</sup>
- GDP €2733,3m<sup>2</sup>
- FDI €397,27m<sup>2</sup>
- Inflation 0,2%<sup>3</sup>
- Export €1325,6m<sup>1</sup>

1. Panevėžys region 2020
2. Panevėžys region 2019
3. Lithuania 2020

# TOP EXPORT MARKETS

- Sweden
- Latvia
- Norway
- Poland
- Germany





For more information about Lithuania, please scan the QR code.

# BUSINESS ENVIRONMENT IN LITHUANIA

© A. Aleksandravičius; source Lithuania.lt

## Ranked 11th in the world for ease of doing business, Lithuania is committed to ensuring the best conditions for business development

Lithuania aims to create the best possible conditions for business and is recognized in the EU for its acceleration in e-government solutions. Business owners can use the government's one-stop shop for public information and services for business and can register the business and pay taxes with a fast online system. The introduction of e-signature, allows to register a company in just one day. The government is constantly working to ensure that the country's laws are business-friendly and encourage business development. That's why Lithuania is ranked 11th in the world for ease of doing business.

World-class companies from fintech, software development, life sciences, and other sectors come here to create tomorrow's solutions. Our universities and public sector work in sync to help businesses achieve their major breakthroughs. It's a place where science and entrepreneurial spirit converge. A supportive environment helps ideas find their way to change the lives of millions for the better.

### GLOBAL RANKING:

- 11th globally for ease of doing business<sup>1</sup>
- 15th globally in Index of economic freedom of the world<sup>2</sup>
- 35th globally in the corruption perception Index<sup>3</sup>
- Top quartile for baseline and cost<sup>4</sup>

1. World Bank Report 2020    3. Transparency International 2020  
2. Heritage Research 2021    4. Global Manufacturing Index 2021



Member  
since 2004



Member  
since 2004



Member  
since 2015



Member  
since 2018

## IT'S EASY TO DO BUSINESS HERE



	<b>5th easiest economy in Europe to do business in</b>
	<b>6th easiest economy in EU for tax payments <sup>1</sup></b>
	<b>7th in the world for trade tariff %</b>
	<b>5th in the world for flexibility in wage determination</b>
	<b>1st in the world for macroeconomic stability <sup>2</sup></b>
	<b>1st in the world for quality of land administration</b>
	<b>2nd in the world for access to electricity <sup>3</sup></b>
	<b>1 day to register a new company with e-signature</b>
	<b>Only €2,500 is needed for the starting capital</b>
	<b>Fair and open public procurement procedures</b>
	<b>Panevėžys - Lithuania's leading manufacturing centre</b>

 **Did you know?**

- According to the 2021 Global Manufacturing Index, Lithuania ranks among such countries as China, India, USA and is among the top three European countries.
- Manufacturing is the main FDI industry in Lithuania (28% of all FDI projects).

1. PWC Paying Taxes 2020  
2. Inflation and debt dynamics  
3. % of total population



© A. Aleksandravičius; source Lithuania.lt



Panevėžys has a long history of being the industrial and technological heartland of Lithuania. Thus, the city constantly aims to develop and adopt cutting-edge technologies to further its industrial capacities in the 21st century. Panevėžys strong talent pool is yet another significant factor in attracting foreign investments and ensuring their success. Highly qualified professionals gear the city towards Industry 4.0 principles and increase investment attractiveness not only for the region but for Lithuania as a whole.

**Elijus Čivilis**  
General Manager of Invest Lithuania



# PANEVĖŽYS – A MODERN MANUFACTURING HUB

**The largest regional manufacturing centre in Lithuania striving to successfully apply advanced technologies**

---

Panevėžys is a clean, cosy and green city, with a compact layout that makes it easy to go from place to place. Enjoy your daily strolls, read a book in one of the many parks, and enjoy fresher air thanks to our green spaces. At the same time, Panevėžys is an important industrial hub with a steadily growing economy. It has developed a reputation as a competitive business location and is the choice of savvy investors.

Panevėžys is the fifth largest city in Lithuania, with a gross value added in the region of €2,733.3m. (2019). At the beginning of 2020, Panevėžys had more than 3,500 companies operating in a wide range of sectors.

The main industrial sectors have long-standing traditions and have developed due to the favourable ecosystem in the Panevėžys region. The great geographic location and the climate helped to develop the strong food and beverage industry, the technological know-how benefited the growth of automotive mechanics and electronics sectors. Other long-established industries include furniture, plastic and textile.





Roquette Amilina, the plant-based ingredients producer, is one of the companies that has attracted the most investment in the Panevėžys region over the last ten years. The convenient geographic location and the existing infrastructure allow it to export high-value products such as starch, glucose syrup, and wheat gluten feed to more than 60 countries worldwide. The capacity of human resources in biotechnology is of utmost importance, and our research and development centre collaborates effectively with local and national education institutions. The company biorefines more than half a million tons of wheat grown in the Panevėžys region each year. By using high-quality crops grown by the local farmers, we aim to contribute to the development of the local economy and sustainable logistics solutions. Panevėžys' potential in the agroindustry helps our company to develop the production of high-value products even further. Roquette Amilina is part of Roquette Group, a global leader in plant-based ingredients, a pioneer of plant proteins, and a leading provider of pharmaceutical excipients. The group addresses current and future societal challenges by unlocking the potential of nature to offer the best ingredients for food, nutrition, and health markets.

**Edvinas Bernotas**

*Plant Manager of Roquette Amilina*



## ENGINEERING EXPERTISE

Panevėžys, with its strengths in engineering expertise, is the largest regional manufacturing centre in Lithuania. It's considered a modern manufacturing hub that strives to apply advanced technologies in its processes successfully.

## SUPPLIER TO THE WORLD'S LARGEST BRANDS

With a long history as one of Europe's largest manufacturers of TV screens and compressors, Panevėžys offers technical know-how and excellence in the field of electrical and mechanical engineering, currently supplying metal and electrical components to well-known brands such as Volvo, Scania, Rolls-Royce, Man, Bombardier, Shell, ESPACE, ABB, and others.



## STRONG MANUFACTURING KNOW-HOW

Almost 31% of employees in the Panevėžys region work in the manufacturing sector, in a wide range of fields: electronic systems, heating products, trailers, components, interior systems, furniture and transport.



### Did you know?

- 25% of Panevėžys region GDP was created by manufacturing (2019).
- 31% of Panevėžys region employees work in manufacturing (2019).
- There are more than 550 manufacturing companies in the Panevėžys region (2020).

# MAIN INDUSTRIES IN PANEVĖŽYS

 No of Employees:

 <p><b>AUTOMATIVE</b></p>	 <p> <b>799</b></p>	 <p> <b>648</b></p>	 <p> <b>1652</b></p>
 <p><b>ELECTRONICS</b></p>	 <p> <b>244</b></p>	 <p> <b>158</b></p>	 <p> <b>235</b></p>
 <p><b>MECHANICS</b></p>	 <p> <b>267</b></p>	 <p> <b>128</b></p>	 <p> <b>71</b></p>
 <p><b>PLASTIC</b></p>	 <p> <b>167</b></p>	 <p> <b>118</b></p>	 <p> <b>60</b></p>
 <p><b>FURNITURE</b></p>	 <p> <b>223</b></p>	 <p> <b>2000</b></p>	 <p> <b>90</b></p>
 <p><b>TEXTILE</b></p>	 <p> <b>293</b></p>	 <p> <b>51</b></p>	
 <p><b>FOOD AND BEVERAGE</b></p>	 <p> <b>336</b></p>	 <p> <b>340</b></p>	

# TOP INVESTING COUNTRIES

- Denmark
- Estonia
- France
- Finland
- Switzerland
- Norway



Panevėžys' excellent geographic location, favourable attitude to investment, competitive costs and loyal, hard-working, skilled employees are some of the main reasons that led the Norwegian companies to invest in Panevėžys. The very low level of corruption and the ease, clarity and speed of company registration are Lithuania's competitive advantages. Panevėžys stands out from other Lithuanian cities as the location with a strong history of industry focus, allowing to find skilled employees with the expertise and know-how required to quickly open and successfully operate the factory. The flight from Oslo to Vilnius takes about 90 minutes and conveniently allows to reach the factory in Panevėžys the same day.

**Aurimas Lukoševičius**  
Chief Executive Officer of Adax



# ON THE WAY TO BUILDING AN INDUSTRY 4.0 ECOSYSTEM

## Focusing on automating and digitising processes to encourage innovation

All the municipalities of the Panevėžys region have agreed on the strategic direction of Industry 4.0 for the region and a trademark “Industry 4 Panevėžys” has been created to highlight the ecosystem and show the importance of the industry for the region’s growth. By further developing its economic strengths, Panevėžys aims to become a globally competitive manufacturing hub and a competitive centre for the creation and application of Industry 4.0 solutions.

The region has accumulated a wealth of knowledge and experience in engineering. It also offers an infrastructure suitable for research and development activities. These factors are the necessary conditions for the development of competences and a highly skilled workforce needed to develop a high added value Industry 4.0 ecosystem in the Panevėžys region.



Top Quartile for baseline and cost 2021



40th globally 2020



43 globally 2021



IOCO Packaging started as Panoden in 1993, when two friends decided to establish a new flexo packaging business in their home town of Panevėžys and has gone from strength to strength ever since. Several causes have led to IOCO Packaging success in the Panevėžys region for the last 28 years. Specialists with the right skills, the convenient geographic location of the district (the centre of Lithuania), and the support of the Panevėžys District Municipality have helped develop the business not only with Lithuanian but also with Scandinavian companies, such as Bisca A/S, Orkla, and others. The IOCO Packaging continues to pave the way for future growth and innovation while remaining rooted in the core principles of exceeding customers' expectations.

**Denas Ušinskas**

*Managing Director of JSC IOCO Packaging*

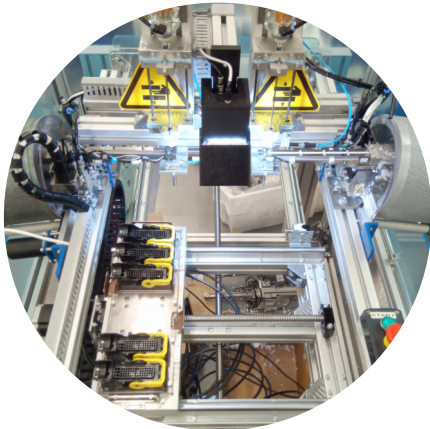
## FOCUS ON AUTOMATION, DIGITISATION, AND INNOVATION

Through close cooperation between science, business, and the public sector, Panevėžys is strategically building an Industry 4.0 ecosystem, focusing on automation, digitisation, and innovation. Whether it is a research and development laboratory or large-scale manufacturing, Panevėžys aims to offer the right environment to support commercialisation.



## PANEVĖŽYS MECHATRONICS CENTRE

Established to support business with industry 4.0 solutions and their implementation in Panevėžys



The organization has built a team of experts in electronics, mechanics, material science, micro and nano engineering and nanotechnology. It is able to provide innovative solutions for electronic and mechatronic systems, microstructure design, nanometre-scale surface coatings, microscopy, system modelling and simulation – all according to customer needs.

Businesses can use the organisation's laboratory facilities and expertise in industrial fields that require automation, electronic control systems, bespoke electronic equipment design and production, design, modelling and simulation of electronic and electromechanical microstructures.



One of the most recent examples of a successful collaboration with a regional company is the technical solution for JSC Adax. The result of our team and the company's electronics and mechanics experts working together is a custom-made, convenient testing stand for electronic circuits. The equipment can fit up to eight units of custom-designed, customer-specific electronic circuits on PCBs. When the equipment is closed, all eight circuits are tested. If any errors in PCB manufacturing and assembly are detected, the user is informed. This stand improves the customer's circuit yield and allows tracking down manufacturing mistakes and ensuring product quality.

**Dr. Mindaugas Dzikaras**

*Director of Panevėžys Mechatronics Center*



### Did you know?

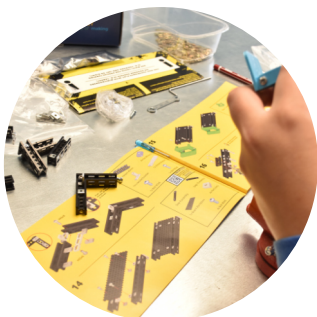
- Panevėžys is home to representatives of international companies such as YASKAWA, Renold, Asco, Bosch Rexroth and provide businesses with multiple solutions relevant to Industry 4.0.
- Panevėžys Mechatronics Center, in cooperation with JSC Neurotechnology, has developed a security tool – an ultrasound-based biometric system - fingerprint scanner and an algorithm for human identification systems, complementing the already used fingerprint recognition systems.



# TALENT POOL

## In Panevėžys, one has the opportunities to develop knowledge in engineering from preschool to university

Panevėžys has a strategic approach to learning. The education system is oriented towards the required economic specialisations in the industry. This is why children have multiple opportunities to learn about technology, engineering, and creative industries from an early age.



### A ROBOTICS CENTRE FOR CHILDREN

Robolabas, a robotics center, provides the opportunity for children as young as five years old to have first-hand experience in applying technological knowledge practically. Through inclusive, non-formal education they learn about creating projects, implementing different solutions, designing and managing technological processes.

### STEAM CENTRE FOR ADOLESCENTS

The newly created STEAM centre gives schoolchildren the opportunity to prepare for their future studies and careers through a collaborative learning space and hands-on experiential learning in biology, chemistry, physics engineering, and artificial intelligence discovery labs.



## VOCATIONAL EDUCATION

Students can choose from various industry-oriented vocational training programs that are relevant to the region's specialization. With the new infrastructure and equipment, young professionals can quickly form the skills needed for a career in technology. Vocational education institutions also work closely with businesses, providing students with opportunities to build careers in innovative industrial companies.

## HIGHER EDUCATION

Higher education institutions in Panevėžys also offer a range of programmes in the field of technology.



**KTU Panevėžys Faculty of Technology and Business** offers bachelor's and master's degrees to students who can choose between technological and social sciences, and offers programmes such as Automatization and Control, Business and Entrepreneurship, Integrated Design and Construction Management, Control Technologies, Management etc.

**Panevėžys University of Applied Sciences** also has a wide range of study programs in the fields of biomedicine, technology, and social science that help to strengthen the human resource potential of Panevėžys and prepare highly qualified employees.



Our RoboLabas and the STEAM Centre are very important for Panevėžys as they help implement the city's chosen Industry 4.0 strategy. Businesses need engineers. That's why we created these centres. We want to show children how exciting and full of discoveries engineering can be so that they can try and find themselves in exact or natural sciences from a young age. Only by working together will we achieve the best results.

**Asta Malčiauskienė**

*Director of Panevėžys Education Center*

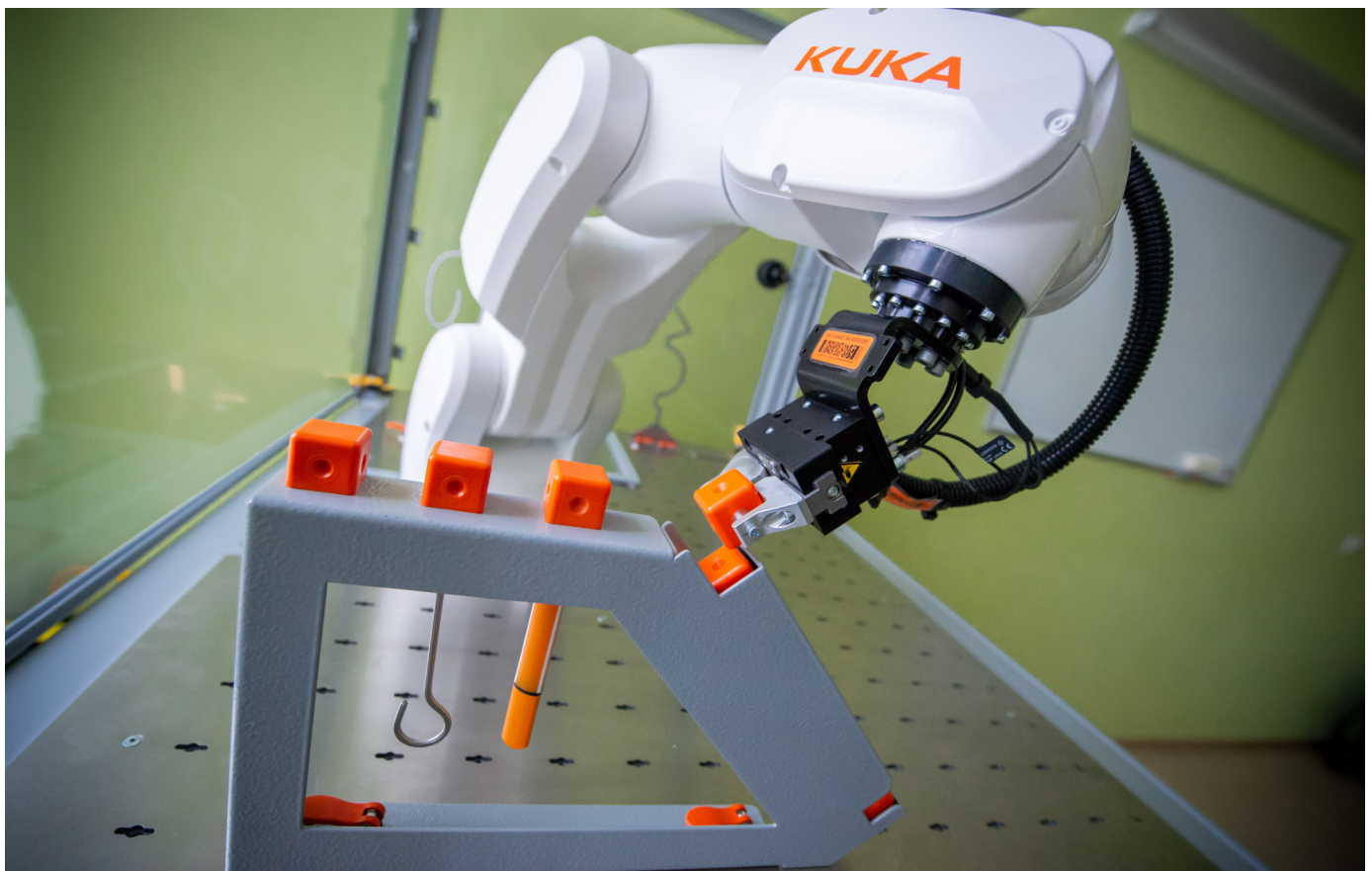


Panevėžys University of Applied Sciences strives to meet the current business needs of the manufacturing industry in the region. Many of our students start their careers in the companies where they did their internships. We participate in the Investor's Spotlight project, where we get valuable insights from business representatives. Two of our programmes (Electromechanics and Electrical and Automation Engineering) have won Investor's Spotlight awards.

We also focus on upgrading our learning spaces and are currently installing a thousand square metres complex of modern laboratories in our Center of Energy Process Studies and Innovation. The laboratories will have state-of-the-art equipment that will enable us to train highly skilled specialists in the relevant industries for the Panevėžys region. These young professionals will work with the latest engineering technologies: industrial robotization solutions, smart home systems, renewable energy solutions, electrical and automation control systems.

***Dr. Gediminas Sargūnas***

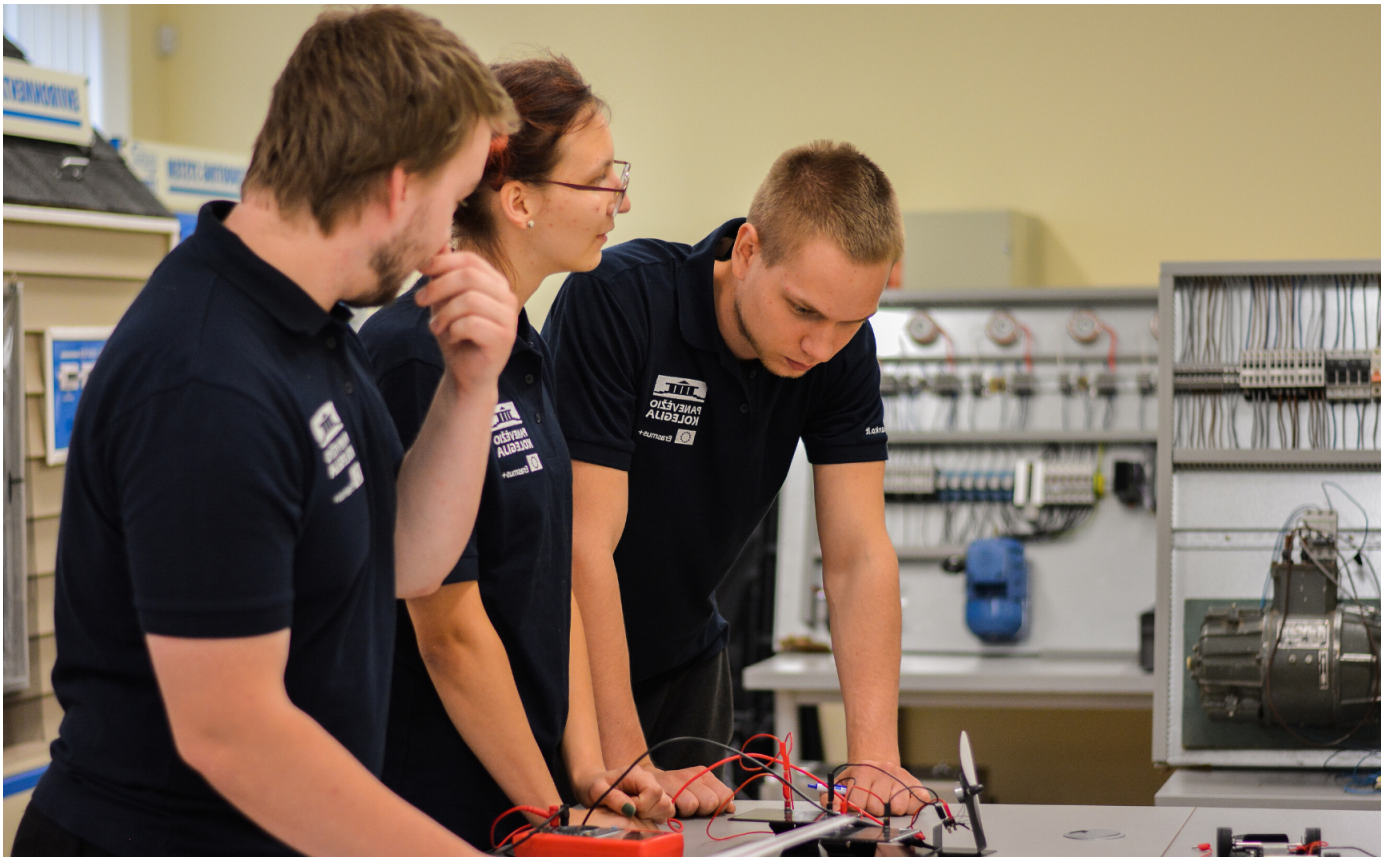
*Director of Panevėžys University of Applied Sciences*



#### Did you know?

- In 2021, schoolchildren from Panevėžys Juozas Balčikonis gymnasium won three awards in Robotex, an international robotics festival.
- In 2021 Panevėžys higher education institutions offer even three study programmes awarded the "Investors Spotlight" quality label for being the most adaptive to the needs of the future business.





A close collaboration between businesses and educational institutions enables the city to prepare skilled specialists for the future. Students can strengthen their theoretical knowledge with practical experience in local companies in the automotive, technical textiles, furniture, and electronics industries. They can choose from more than 100 programmes in industry, commerce and services, construction, and agriculture, allowing them to acquire professional qualifications for a successful future career.

	<b>EDUCATIONAL INSTITUTIONS</b>	2 Universities, 6 Vocational schools <sup>1</sup>
	<b>STUDY PROGRAMS</b>	89 study programs <sup>1</sup>
	<b>ENGLISH PROFICIENCY</b>	85% proficiency in English <sup>2</sup>
	<b>INTERNET ACCESS</b>	1st globally for public wifi speed <sup>3</sup> 100% mobile 4G coverage <sup>4</sup>
	<b>AVERAGE SALARY</b>	€1300 <sup>5</sup>

1. Panevėžys Region 2020
2. Lithuania 2018
3. Lithuania 2019
4. Lithuania 2020
5. Gross, Panevėžys 2020



Our greatest asset and competitiveness are our people! Lithuanians' curiosity, eagerness to build their competences, and motivation to get things done will help everyone make money now and in the future.

**Tomas Prūsas**

*Chief Executive Officer of Harju Elekter. Chairman of Panevėžys Industry 4.0 Development Board*



## COLLABORATIVE BUSINESS CULTURE

**Multiple platforms to network, share best practices, and further improve the business environment**

Despite the diversity of the Panevėžys economy, Panevėžys businesses have a long-standing culture of cooperation and collaboration. Several organisations actively represent business interests at municipal, regional, and state level, providing opportunities for businesses to network, raise concerns, jointly seek solutions and share best practices.



If you are interested in sharing best practices and increasing your competitiveness, you should become a member of the **Panevėžys Region Industry Association**. It offers a platform for businesses to share their knowledge, know-how, and expertise and boost their growth in the industry sector.



To ensure your business interests are well represented, you can join the **Panevėžys Chamber of Commerce, Industry and Crafts**. It unites more than 270 members across various businesses and educational institutions. The organisation represents the interests of its members and promotes business development and export by taking an active part in various international projects and programmes.



Membership in the **FIB Association**, a leading network for foreign investors doing business in the Panevėžys region, will allow you to be a part of the dialogue with the public sector to further improve the business environment for foreign investors. This organisation aims to develop a platform for discussions, mutual understanding with regional authorities and other relevant bodies.

If you want to participate in business development in the Panevėžys region, you should join the **Panevėžys Business Council**. It focuses on strategic business environment planning and economic growth of Panevėžys and consists of business associations and local authorities in the city.



**Panevėžys Business Council and Panevėžys Industry 4.0 Development Advisory Board** invites You to become a part the regional Industry 4.0 ecosystem. This organisation unites science and education institutions, the public sector, and independent experts of innovation, economic growth, and other areas. The goal of the advisory board is to promote strategic advancement of Industry 4.0 development in the Panevėžys region.



Recognising the business potential of the Panevėžys region and the importance of collaboration, FIB Association successfully unites businesses in the Northern part of Lithuania. We promote the Western business culture and serve as a platform for foreign capital companies to exchange their views, cooperate and add value to the Northern Lithuania region.

**Bjarne O.R Møller**  
Chairman of FIB Association



AKTYVAUS V LO ERDVĖ



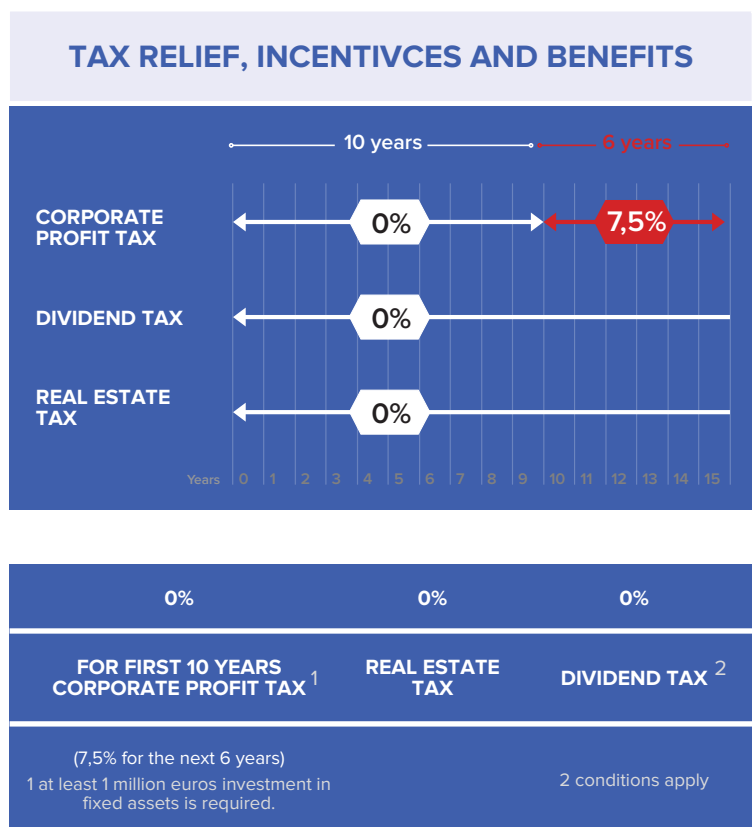


## Panevėžys offers a business support network helping start-ups, investors, local and foreign businesses grow

Businesses can get help regarding construction management, legal and financial issues, land lease, and project customisation. Investors get consultations where they are provided with all the necessary information through all stages of investment.

Companies can start operating in less than three months! The city can offer industrial buildings available now for temporary lease for warehousing or production. Businesses can use tax relief and other incentives and benefits to grow faster.

	<b>CONSTRUCTION MANAGEMENT</b>	Experienced construction management team – general contractor selection, construction supervision, auditing of project costs, etc. -available for greenfield projects.
	<b>CONSULTATIONS</b>	Provision of all necessary information through all stages of investment – from site selection to construction and aftercare.
	<b>LEGAL, TAX, EU SUPPORT SERVICES</b>	Tailored network of tax, legal, financial support consultants, assistance throughout the whole process
	<b>LAND LEASE</b>	99-year lease on fully-ready land plots with all necessary infrastructure for greenfield investments.
	<b>CUSTOMISATION</b>	Built-to-suit projects: purchase or lease of facilities tailored to your business needs.
	<b>EASY START</b>	Ready-made industrial buildings available now for temporary lease for warehousing or production. Start operating in less than 3 months





## PANEVĖŽYS CITY MUNICIPALITY

The city's municipality promotes the growth of socially responsible businesses and close cooperation between the public and private sectors. It provides discounts on state land rent and real estate taxes to companies that offer sponsorship for social initiatives in culture, art, sport, and science and encourage growth in these areas.

## PANEVĖŽYS FREE ECONOMIC ZONE (FEZ)

FEZ is a one-stop shop with the vision to create the best business environment for successful investments and support investors in the areas of tax relief, incentives, and easy start premises to rent. Panevėžys Free Economic Zone offers all necessary services to start operations.



## PANEVĖŽYS SCIENCE AND TECHNOLOGY PARK

Panevėžys Science and Technology Park offers free advice on taxation, business registration processes, financial support for start-ups, and helps prepare a business plan and legal requirements for manufacturing, services, and construction industries.

## AGENCIES SUPPORTING BUSINESS





## QUALITY OF LIFE

### A green city where heritage and traditions blend naturally with innovation



Panevėžys offers a wide range of attractions, ranging from museums and galleries, theatres and cinemas, to ice arena and culture and leisure centres. The much-anticipated Stasys Eidrigevičius Art Centre, to be built in the northern part of the city center, will become the key cultural hub in Northern Lithuania.

In Panevėžys, everyone can find something to see, do, and experience. The city's compact layout allows families to avoid traffic jams and spend more time enjoying quality leisure time together.

#### **RICH ART SCENE**

From theatre festivals and opera to photography biennials and cinema

The city is particularly generous to art lovers. It's home to many artists whose works make Panevėžys an interesting and attractive place to live and visit.

Here, one can find the legendary Juozas Miltinis Drama Theater and a Heritage Study Center. The little ones will be delighted to see the Puppet Wagon Theater and Theater Menas with extensive programs for both adults and children. Panevėžys also holds several theatre festivals, such as the International Puppet Wagon Theater Festival and the National Festival of Chamber Theatres.





The city is also known for its International Ceramics Symposium and the International Symposium GlassJazz, which innovatively combines glass and music. Every spring, one can join the International Artists Plein-air or the Panevėžys International Photography Biennial “Man and the City” at the Photography Gallery.

Panevėžys Music Theater lets music lovers enjoy a wide variety of music, from concerts to operas. Also, in Panevėžys’ cinema theatres, movies are screened in their original language so one can enjoy them fully.

## SPORTS

From basketball and football, to tennis and swimming



Basketball is one of the most popular sports in Lithuania, bringing big crowds of spectators to every game in Panevėžys.

Cycling enthusiasts will find what to do here, too. Panevėžys was once known as the capital of cycling, and its infrastructure of over 107km cycling paths for cycling lovers and the cycling track is still available in the Cido Area. Panevėžys is also renowned for its Ultra Triathlon events that are held each year with big crowds of people cheering the sportsmen and sportswomen.

Most importantly, Panevėžys has multiple amateur teams for children and adults where anyone interested in an active lifestyle can find something of interest.



## EVENTS

Multiple events with an artisan feel

Summer events “Let's Meet on Friday” welcome everyone to visit the city center and enjoy the live music, educational and cultural events every Friday during the summer season.

Every year, Panevėžys celebrates its birthday with an artisan collective fair. There, one can enjoy delicious artisan food and drinks, buy beautifully crafted seasonal gifts and products from bespoke designer-makers. Live entertainment, educational programs for children, sports activities, concerts, and beautiful fireworks make these gatherings must-see events.



The city also has its traditions on commemorating national days, such as the State Day, the Restoration of the State Day, the Midsummer Day, and other events, such as the Christmas tree lighting.

	<b>BOOKS AND PUBLICATIONS</b>	<b>500,000</b>
	<b>ART PIECES</b>	<b>1250</b>
	<b>EXHIBITS</b>	<b>118,000</b>

<b>MUSEUMS AND GALLERIES</b>	<b>THEATRES</b>	<b>CULTURE AND LEISURE CENTRES</b>	<b>CINEMAS</b>	<b>ICE ARENAS</b>
<b>18</b>	<b>4</b>	<b>1</b>	<b>2</b>	<b>1</b>

## INDUSTRIAL TOURISM

A unique approach to industrial sites that attracts tourists

Panevėžys invites residents and visitors to discover existing companies and industrial heritage sites. One can visit Kalnapilis, the oldest industrial company in the city, which has never stopped producing beer since its establishment or explore a former soap factory where one tank used to make as much as 3,000kg of soap per day. Artists rediscover the beauty and history of the industrial sector of Panevėžys by holding performances at the industrial heritage sites. The Aukštaitija narrow gauge railway has been operating for more than 100 years. They organise excursions, educational programs, tastings, and celebrations on a regular basis.



Today, I cannot imagine living in any other city but Panevėžys. Our family made the right decision to choose Panevėžys as our home – it's a perfect place to enjoy a quality family life. The city is welcoming, vibrant, and friendly, with many family-orientated services starting with various extracurricular activities for children, beautiful open spaces to play at, and ending with a well-developed leisure infrastructure for the entire family to enjoy. Parks, open spaces, outdoor recreation, tourist attractions, culture, and artistic activities enable everyone to find something interesting to do.

**Vilanda Reikalienė**

*Head of Tourism Panevėžys Development Agency*



“The revival of legends“ is Vaida Andrijauskaitė and Dan Hermouet’s exhibition in the former TV screen factory, photo by P. Židonis 2021.



“The face of water“ is Dan Hermouet’s exhibition in the disused water reservoir, photo by Dan Hermouet 2020.



Panevėžys has a huge potential to become a beacon of creativity and art. There are lots of opportunities for artists - rent for accommodation or art studio is more than affordable, the city's infrastructure is bike-friendly, plenty of green spaces and parks, cozy coffee shops to meet and chat with fellow creatives. However, what strikes us the most is that the biggest advantage of the city is its openness to new ways of expression and acceptance of a need to transform itself creatively by tapping into the rich industrial and artistic legacy of a region.

We are especially fascinated by the unexplored potential of industrial heritage as a playground for arts and culture in Panevėžys. Over the last year, we only started to scratch the surface by setting up new cultural destinations within the city, such as a former TV screen factory and disused water reservoir both adapted to interactive visual arts displays that also tell an in-depth, but different story of Panevėžys.

**Vaida Andrijauskaitė and Dan Hermouet**

*Artists*





# A PERFECT PLACE FOR A FAMILY

## A green city where families can enjoy a balanced life thanks to great infrastructure and an active community

With safe neighbourhoods, a variety of good kindergartens and schools, over a hundred affordable extracurricular activities covering a wide range of interests, Panevėžys is an attractive place for young families.

The real estate prices are competitive here. Also, the financial initiative of the Panevėžys Municipality to support young families purchasing their first home makes it easier for first-time buyers to become home-owners and settle in the city.

The city's compact layout with many walkable distances and cycling infrastructure allows residents to save time in traffic and spend it with their family, friends, pursuing hobbies or enjoying a new cuisine at one of many restaurants and cafés.

A great geographic location allows one to enjoy the attractions in Panevėžys and its district and reach several surrounding cities, the sea-side, and two capitals, Vilnius and Riga, in less than two hours.

-  **A convenient network of schools**, bringing high quality education to children and offering support for those who do not speak Lithuanian to integrate successfully into any school.
-  **More than 100 different clubs** allowing to fulfill hobbies and talents in extracurricular activities.
-  **More than 15 companies inviting families to spend their time together** in learning activities covering many fields.

-  **31 kindergartens**, offering all year round vacancies and support to all the children including those who do not speak Lithuanian.
-  **More than 150 companies** that provide health care services.
-  **17 community-based organisations.**
-  **8 dog walking spaces** in the city accommodating dog lovers.



Panevėžys is a great place for a young family. The city offers quality education, a wide range of extracurricular activities, outdoor recreation opportunities, walkable distance playgrounds, parks, and quality medical services. Several non-government organisations with a focus on improving family amenities and support services as well as such initiatives as “Moms, let’s go for a coffee”, and “Social breakfast” enable even the families who just moved into the city to integrate successfully find new friends and build a strong community.

**Ieva Grigaitė**  
Director of Seven Moments

# ABOUT PANEVĖŽYS DEVELOPMENT AGENCY

## A green city where families can enjoy a balanced life thanks to great infrastructure and an active community

Panevėžys Development Agency encourages investors and tourists to discover the growing potential of the Panevėžys region now. It unites all the stakeholders, experts, and decision-makers in Panevėžys – connects businesses with partners, talents with opportunities, and tourists with destinations. The team of experts continuously gathers, compiles, and analyses data from the region's ecosystem to provide extensive advice and support to potential investors and visitors. Its services are complimentary, confidential, and tailored to individual needs. Support is available to national and international companies and individuals.



Both potential investors and companies that have been operating in Panevėžys for some time can benefit from an extensive network of both local and national agencies ready to provide them with professional and tailored support. We cover any topic important to business: from land plots, permits and taxes to financial support mechanisms, digitization of processes and talent attraction. There would surely be an expert ready to guide them through the whole process of finding a solution to even the most complex issue.

We at Panevėžys Development Agency understand that sometimes finding out the specialization of each support institution might not be straightforward. Therefore, we act as a one-stop shop that helps connect one's issues with the relevant consultants at one of our partner institutions – and then follow the case until it is fully resolved. In addition, our team is working on implementing more systemic improvements to the business environment in Panevėžys – be it the further development of the Industry 4.0 ecosystem or finding ways to ensure the supply of human resources. We are always eager to meet with business representatives who are ready to share their ideas, advice and join the effort. Our door is always open – let's talk!

**Monika Miniotaitė**

*Director of Panevėžys Development Agency*

### CONTACT US TO EXPLORE HOW WE CAN HELP YOUR BUSINESS

+370 616 39 793

info@panevezysnow.lt

[www.panevezysnow.lt](http://www.panevezysnow.lt)



Located between two capitals – Vilnius and Riga, Panevėžys offers a modern business environment without stress, hassle, and expenses common in big cities. With a talented, diverse, and welcoming population, Panevėžys is a city of opportunity, constantly growing and attracting global investment and new businesses. Our people are creative, innovative, curious, and passionate – and most importantly, get things done. Visit us and explore the investment opportunities.



---

This publication was prepared by Panevėžys Development Agency, while implementing the project “Discover Panevėžys: potential of the business environment“. The project is funded by Panevėžys City Municipality. 2021.